



Model AGT626B

Max. Capacity: 300 lbs.
300 pounds including 1- person and gear
Platform Size: 3 ft. x 3 ft.
Seat Height: 19-inches

Congratulations on your purchase of an Advanced Game Technology Global tripod stand! The following information is included in your instructions.

- Safety and instructions
- Warnings
- Container contents
- Assembly instructions
- Maintenance and care instructions

Warning

Maximum Weight Capacity:
300 pounds including person and gear.

DANGER:

DO NOT use this shooting house tower without securing it to the ground.
DO NOT use before reading and understanding the instructions included with this shooting house tower.

DO NOT use your shooting house tower while under the influence of medication, alcohol, or drugs or if you experience dizzy spells, heart problems, or have a fear of heights.

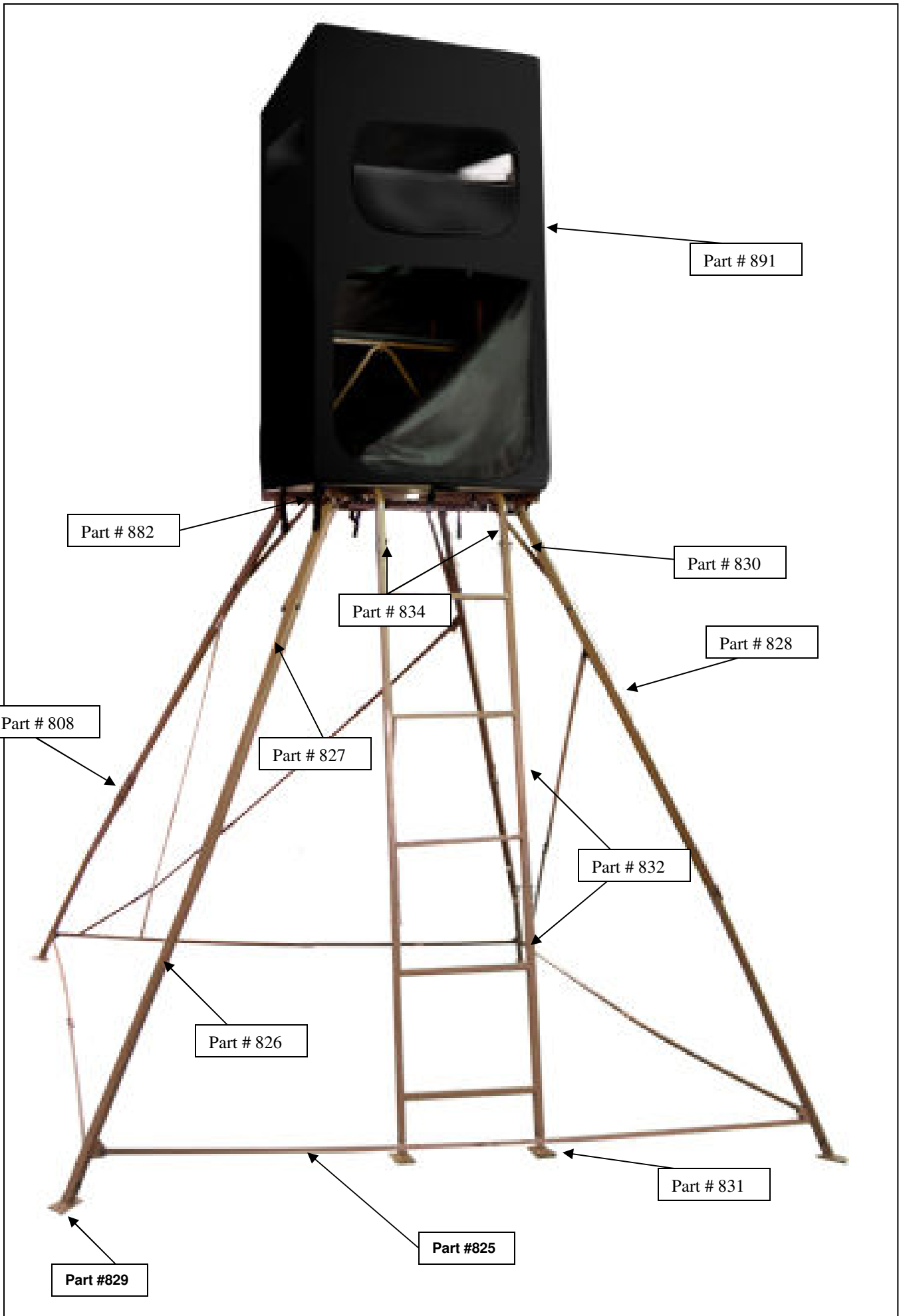
DO NOT use this shooting house tower during inclement weather.

WARNING:

Before each use, always inspect this shooting house tower for undue wear, deformity, corrosion or other visible damage.



ALWAYS: Make sure that you are comfortable and fully understand the proper use and installation of the AGT626B shooting tower.



Part # 891

Part # 882

Part # 830

Part # 834

Part # 828

Part # 808

Part # 827

Part # 832

Part # 826

Part # 831

Part # 825

Part # 829

Model: AGT626B Shooting House Tower

Maximum Weight Limit —300 lbs.

300 pounds including 1- person and gear

CARTON CONTENTS: AGT626B

14	Leg Cross Brace	Part # 825
4	Bottom Leg Section	Part # 826
1	Top Leg Section	Part # 827
3	Top Leg Section w/ Cross Brace Tab	Part # 828
8	Leg Bracket	Part # 808
4	Leg Foot	Part # 829
4	Platform Brace	Part # 830
2	Ladder Foot	Part # 831
2	Ladder Section	Part # 832
2	Ladder Attachment	Part # 834
2	Platform Base Bar	Part # 880
2	Platform Base	Part # 881
1	Platform Plastic Floor	Part # 882
1	Black Seat Cushion	Part # 892
1	Seat Frame	Part # 893
1	Right Seat Support	Part # 925
1	Left Seat Support	Part # 924
1	Seat Support Brace	Part # 896
1	Left Front Wall Vertical Support Bar	Part # 923
1	Right Front Wall Vertical Support Bar	Part # 922
2	Horizontal Support	Part # 899
2	Side Horizontal Support	Part # 900
2	Roof Bar	Part # 901
1	Roof Cross-bar	Part # 902
2	Roof Bar With Bolt Hole	Part # 903
1	Black 600D Polyester Enclosure	Part # 891
1	Front Platform Section	Part # 905
1	Rear Platform Section	Part # 906

Hardware:

4	2 inch locking pin	Part # 050
8	6mm x 3/4-Inch Bolt	Part # 030
12	6mm x 1 1/4-Inch Bolt	Part # 023
8	8mm x 1-Inch Bolt	Part # 014
14	8mm x 1 1/4 Inch Bolt	Part # 022
5	8mm x 1 3/8-Inch Bolt	Part # 017
4	8mm x 1 3/4-Inch Bolt	Part # 005
2	8mm x 1 5/8Inch Bolt	Part # 036
30	8mm x 2 1/8 Inch Bolt	Part # 001
5	8mm x 2-3/8 Inch Bolt	Part # 018
2	8mm x 3 Inch Bolt	Part # 009
16	8mm x 2-3/4 Inch Bolt	Part # 010
4	8mm x 4 Inch Bolt	Part # 012
86	8mm Locknut	Part # 003
172	8mm Steel washer	Part # 004
20	6mm Locknut	Part # 027
40	6mm Steel washer	Part # 028

Warning: This shooting house tower requires four or more people to safely set up. Never try and set up this shooting house tower by yourself or with less than four people.



Advanced Game Technology Inc.
6818 N. Frostwood Parkway
Peoria, IL 61615
309-691-2950
www.advancedgametechnology.com

Maintenance & Care

To ensure your safety, inspect your treestand before each use. Never use the treestand if damage is detected or suspected.

Regular maintenance by the user includes, but is not limited to the following:

Tightening or replacement of hardware (specified and supplied by the manufacturer).

Replacement of rope, straps, cables, etc. (specified and supplied by the manufacturer).

Advanced Game Technology Global, Inc., LIMITED WARRANTY

What This Warranty Covers:

Advanced Game Technology Global, Inc. treestand products are covered against defects in workmanship and materials for a period of one (1) year from the original date of purchase.

Advanced Game Technology Global, Inc. will replace without charge any original part determined by Advanced Game Technology Global, Inc. to be defective under the terms of this warranty.

What This Warranty Does Not Cover:

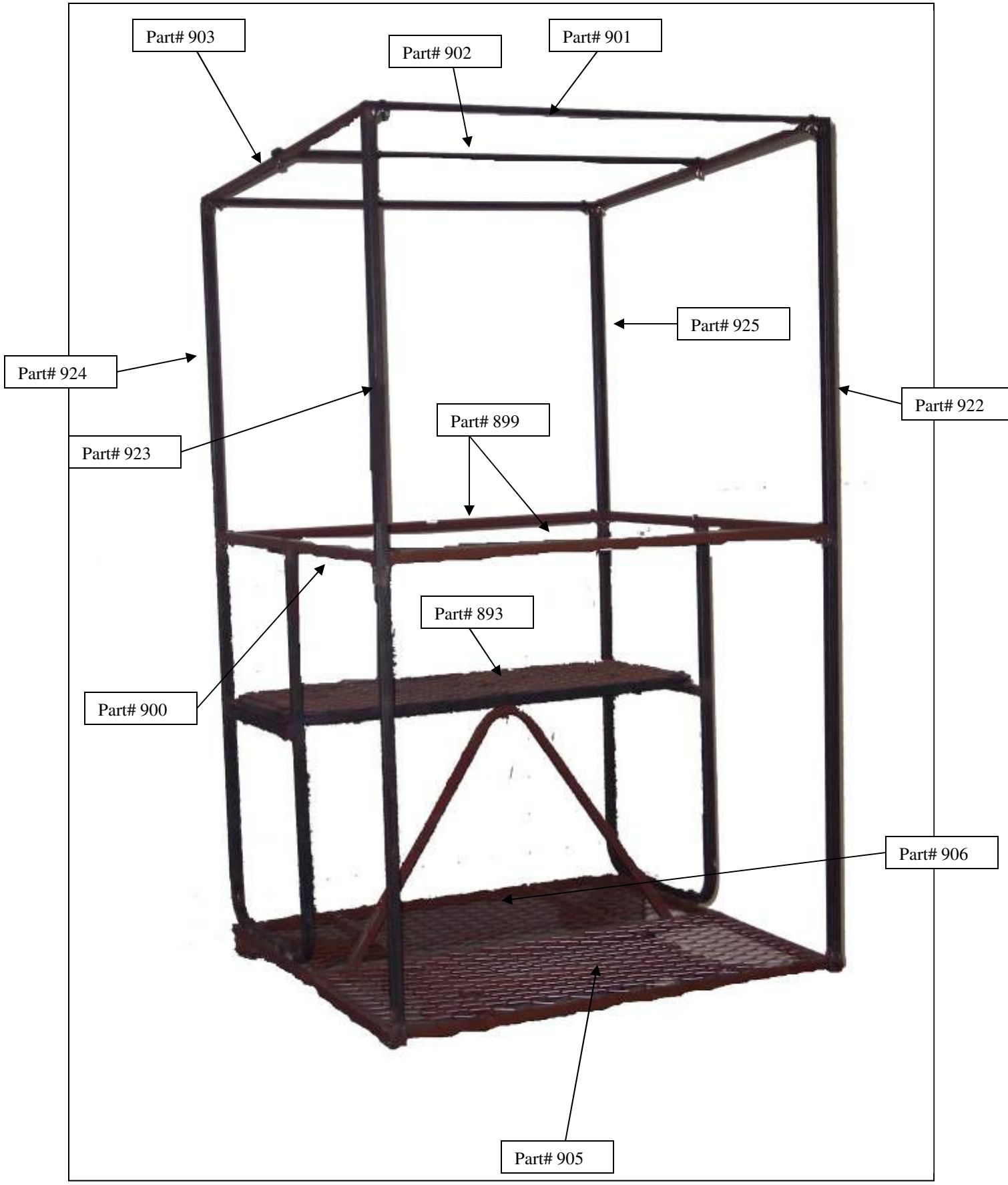
Lost parts; accidents; malfunctions caused by alterations, improper installation, use of unauthorized parts or attachments; damages due to abuse/misuse; normal wear; excessive wear caused by owners neglect; or products that are put to commercial/rental use.

Statement of Liability

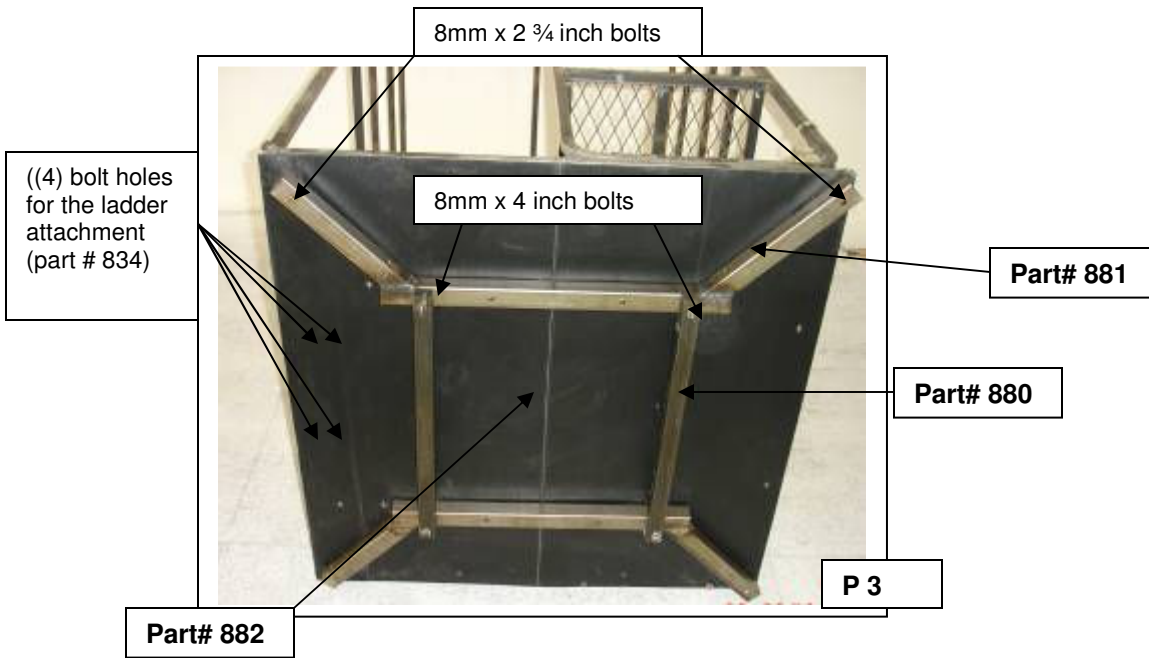
It is expressly understood that Advanced Game Technology Global, Inc's., liability for its products, whether due to breach of warranty, negligence, strict liability, or otherwise, is limited to the repair or replacement of any defective parts within the one (1) year time limit mentioned above. Advanced Game Technology Global, Inc. is not liable for any injury or expense, whether direct or consequential, including but not limited to loss of use, income, profit or damage to material arising in connection with the sale, installation, use of, inability to use, or the repair or replacement of Advanced Game Technology Global, Inc., products. Advanced Game Technology Global, Inc., reserves the right to make alterations or modifications in its products at any time, which in its opinion may improve the performance and efficiency of the product. It shall not be obligated to make such alterations or modifications to products already in service.

Advanced Game Technology Global, Inc. treestands are delivered by Advanced Game Technology Global, Inc., with the understanding that Advanced Game Technology Global, Inc., assumes no responsibility for its resale or safe use.

Some states do not allow the exclusion or limitation of incidental or consequential damages, so the above limitation or exclusion may not apply to you. You should check the State Laws to see if they apply.



**ASSEMBLY (platform section)
AGT626B**



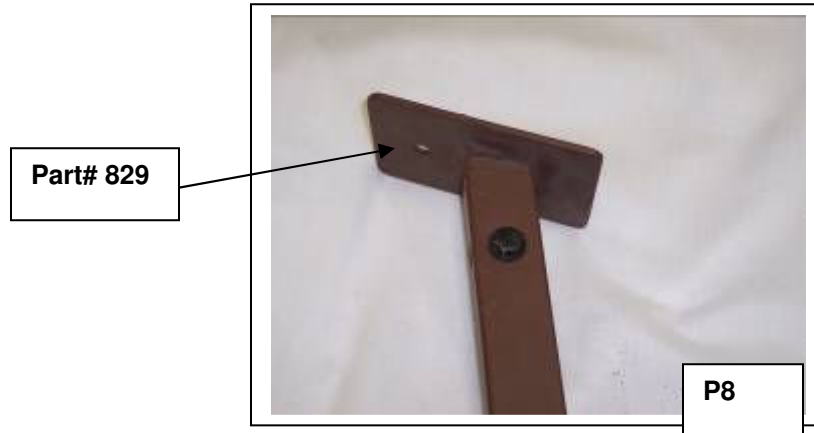
ASSEMBLY (top section)

AGT626B

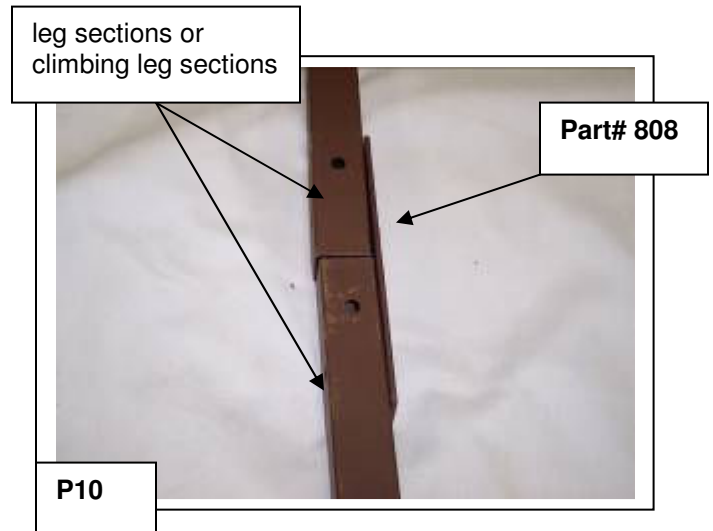
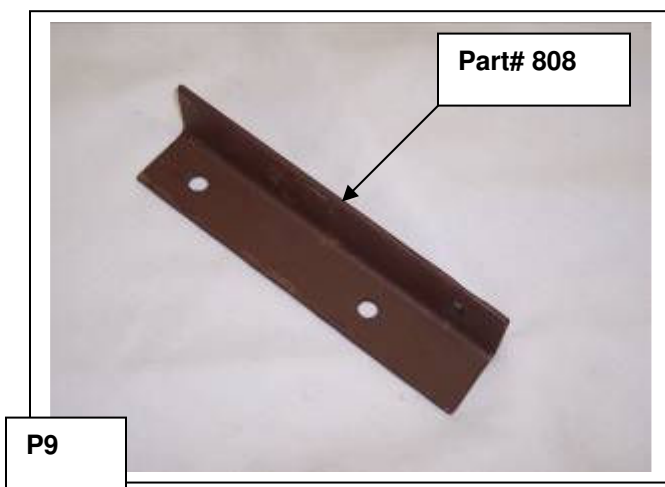
1. To assure that all parts will fit together when assembling the top section of the shooting house tower, hand-tighten all locknuts and bolts.
2. Assemble the front platform section (part# 905), rear platform sections (part# 906) and the seat support brace (part# 896), using (2) 8mm x 2 1/8 inch bolts (4) 8mm steel washers and (2) 8mm locknuts in the center. Bolt the outside two holes of the platform sections and the seat support brace, using (2) 8mm x 3 inch bolts (4) 8mm x steel washers and (2) 8mm locknuts. (picture 2)
3. Bolt the right front wall vertical support bar (part# 922) and the left front wall vertical support bar (part# 923) to the front of the platform, using (2) 8mm x 1 5/8 inch bolts, (4) 8mm steel washers and (2) 8mm locknuts. (make sure the bolt tabs are on the inside). (picture 1 and 2)
4. Bolt the right seat support (part# 925) and the left seat support (part# 924) to the rear platform, using (4) 8mm x 2 1/8 inch bolts, (8) 8mm steel washers and (4) 8mm locknuts. (make sure the bolt tabs are on the inside). (picture 1 and 2)
5. Bolt the seat frame (part# 893) to the left and right seat support and seat support brace, using (5) 8mm x 2 1/8 inch bolts, (10) 8mm steel washers and (5) 8mm locknuts. (picture 1 and 2)
6. Bolt the horizontal support (part# 899) and the side horizontal support (part# 900) to the left and right seat support and left and right front wall vertical support bar, using (10) 6mm x 1 1/4 inch bolts, (20) 6mm steel washers and (10) 6mm locknuts. (picture 1)
7. Bolt the (2) roof bar (part# 901) to the left and right seat support and left and right front wall vertical support bar, using (4) 6mm x 3/4 inch bolts, (8) 6mm steel washers and (2) 6mm locknuts. (picture 1)
8. Bolt the (2) roof bars (part# 903) to the left and right seat support and left and right front wall vertical support bar, using (4) 6mm x 3/4 inch bolts, (8) 6mm steel washers and (4) 6mm locknuts. (picture 1)
9. Bolt the roof cross bar (part# 902) to the (2) roof bars, using (2) 6mm x 1 1/4 inch bolts, (4) 6mm steel washers and (2) 6mm locknuts. (picture 1)
10. Tip the shooting house top section on to it side. (picture 3)
11. Align the bolt holes on the platform and the platform plastic floor (part# 882), making sure the (4) bolt holes for the ladder attachment (part # 834) are to the front. Bolt the ladder attachment to the bottom of the platform, using (4) 8mm x 2 3/8 inch bolts, (8) 8mm steel washers and (4) 8mm locknuts. (picture 3)
12. Align the platform, platform plastic floor and the (2) platform base (part# 881), using (8) 8mm x 2 3/4 inch bolts, (16) 8mm steel washers and (8) 8mm locknuts. (picture 3)
13. Align the platform base bar (part# 880) and the (2) platform bases, using (4) 8mm x 4 inch bolts, (8) 8mm steel washers and (4) 8mm locknuts. (picture 3)
14. Tighten all locknuts and bolts except the bolts that hold the platform bases and platform base bars.
15. pull the tower cover (Part# 891) over the assembled tower frame and tie the straps securely around the platform frame. Make sure that the C-shaped door is in the right position before pulling the cover over the frame. DO NOT attempt to reposition the cover after it is pulled over the frame, this will result in tearing the cover.

ASSEMBLY (leg section) AGT626B

- 21 Assemble the four legs by laying out the two sections of each leg. Start with the bottom leg section (part# 826) and top leg sections (part# 828). Make sure that the tabs for the cross braces (part # 825) are at the bottom and top leg sections are facing into the inside. One top leg section will not have a cross brace tab. (refer to picture on page 2 of this instruction booklet)
22. Bolt the foot (part# 829) to the bottom leg sections (part# 826), using (4) 8mm x 1 3/4-inch bolts, (8) 8mm steel washers and (4) 8mm locknuts. The foot must face out and away from the cross braces on each leg. (picture 8)



23. Assemble (2) leg bracket (part# 808) to three complete leg sections. (Do not assemble the top (part# 827 with out the cross brace tab) and bottom leg section. Butt together the leg sections together and align the holes in the leg sections with the first leg bracket. (picture 9 and 10)

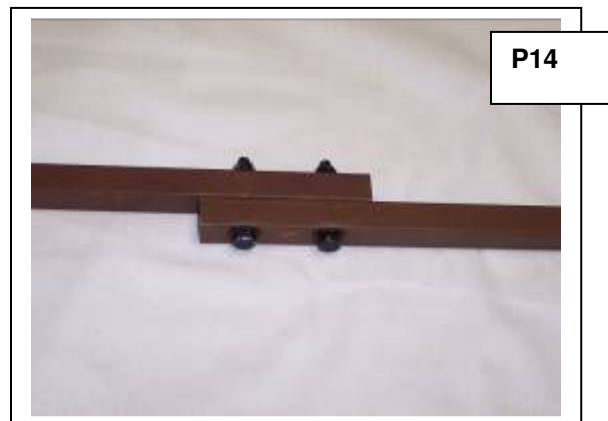
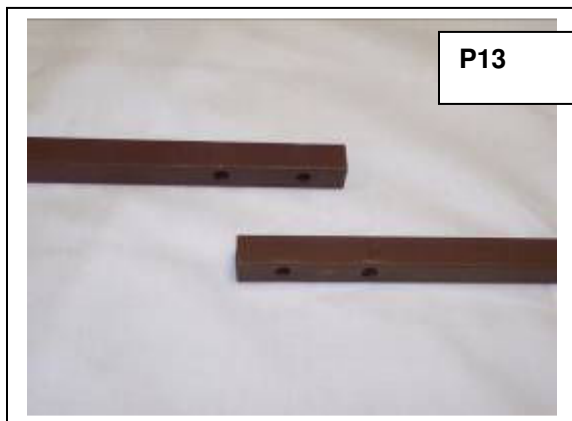


ASSEMBLY (leg section continued) AGT626B

- 24 Finish assembling the (2) leg bracket (part# 808) to each leg sections, by align the holes in the leg sections with the first and second leg bracket. (picture 11)
- 25 Bolt together the (2) leg brackets and the two leg sections (6-leg brackets and 6-leg sections total), using (4) 8mm x 2-1/8 inch bolts, (8) 8mm steel washers and (4) 8mm locknuts. Do not assemble 1-bottom leg section (Part# 826) and top leg section (Part# 827), they will be used during the standing up of the tower. (picture 12)
- 26 Assemble all legs together.

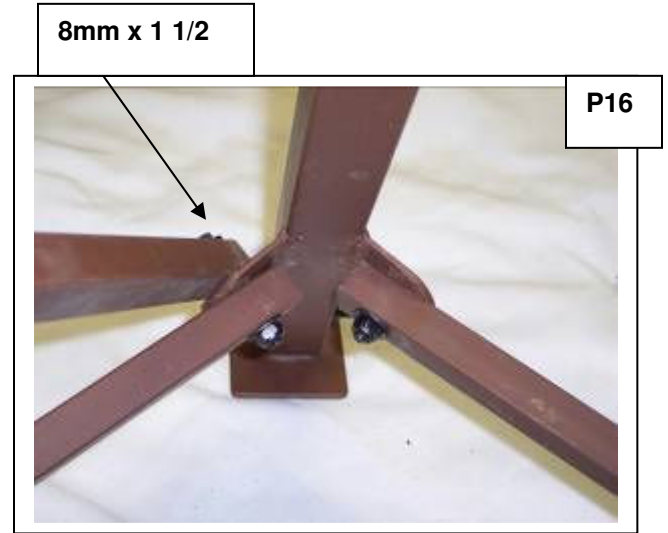
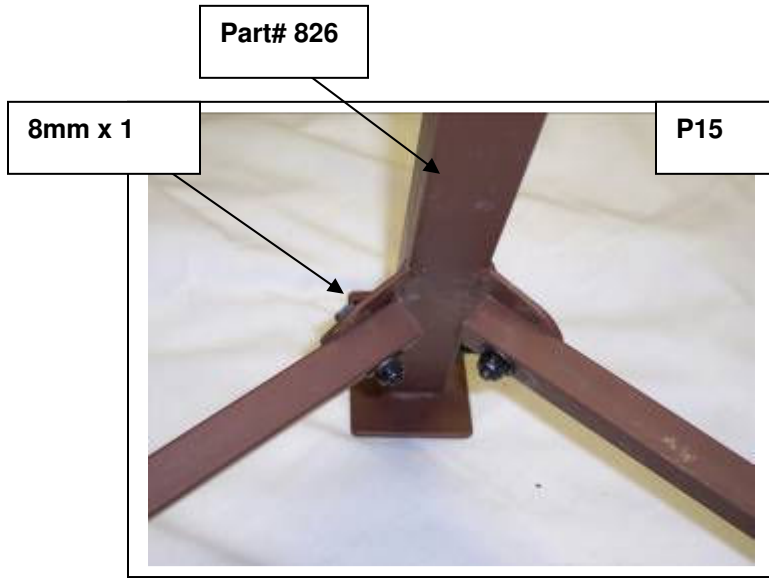


- 27 Tip the assembled top section on its side. With the three assembled legs, bolt them to the platform leg brackets. (do not bolt an assembled support leg to the left front platform leg bracket). Using (3) 8mm x 2 1/8 inch bolts, (6) 8mm steel washers and (3) 8mm locknuts. (refer to picture on page 2 of this instruction booklet)
- 28 Bolt the platform braces (part# 830) to the three assembled leg sections. (refer to picture on page 2 of this instruction booklet). Using (3) 8mm x 2 3/4 inch bolts, (6) 8mm steel washers and (3) 8mm locknuts.
- 29 Bolt the platform braces to the platform base. Using (3) 8mm x 2 3/4 inch bolts, (6) 8mm steel washers and (3) 8mm locknuts.
- 30 Bolt two cross braces (part# 825) (the bars are all the same length) together using (2) 8mm x 1-1/4 inch bolts, (4) 8mm steel washers and (2) 8mm locknuts. (picture 13 and 14)
- 31 Bolt the remaining (12) cross braces together using (24) 8mm x 1-1/4 inch bolts, (48) 8mm steel washers and (24) 8mm locknuts. (picture 13 and 14)

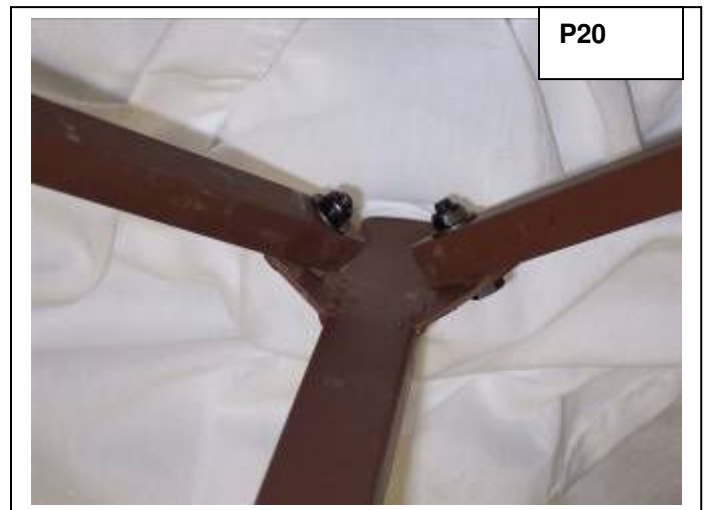
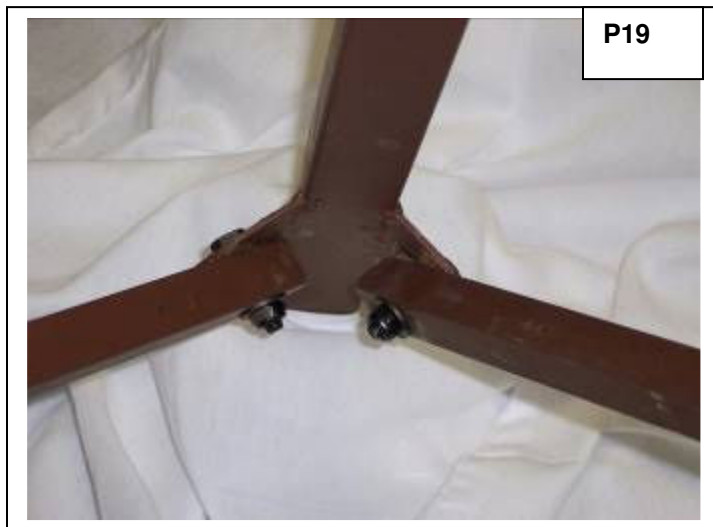


ASSEMBLY (leg section continued)
AGT626B

32 Refer to the picture on page 2 of this instruction booklet. Bolt (4) assembled cross brace to the tabs between the bottom of two leg sections. Using (4) 8mm x 1 inch bolts, (8) 8mm steel washers and (4) 8mm locknuts. Where two cross braces are bolted to the same cross brace tab use (2) 8mm x 1 1/2 inch bolts, (4) 8mm steel washers and (2) 8mm locknuts. (picture 15 and 16)



33 Bolt two assembled cross brace to the tabs on the bottom and top leg sections. Using (2) 8mm x 1 inch bolts, (4) 8mm steel washers and (2) 8mm locknuts.



ASSEMBLY (leg section continued)
AGT626B

- 34 With the shooting tower standing on three assembled legs lift the tower up and bolt the left front top leg section (part# 827) to the left front platform base tabs. Using (1) 8mm x 2 1/8 inch bolts, (2) 8mm steel washers and (1) 8mm locknuts. (refer to picture on page 2 of this instruction booklet)
- 35 Bolt the platform brace to the left front top leg section and the platform base. Using (2) 8mm x 2 3/4 inch bolts, (4) 8mm steel washers and (2) 8mm locknuts.
- 36 Lift the tower up and bolt the assembled leg section (with part# 826) to the left front top leg section. Using (2) leg brackets and (4) 8mm x 2 1/8 inch bolts, (8) 8mm steel washers and (4) 8mm locknuts.
- 37 Bolt all remaining (3) leg cross braces to the leg sections. Using (4) 8mm x 1 inch bolts, (8) 8mm steel washers and (4) 8mm locknuts. Where two cross braces are bolted to the same cross brace tab use (1) 8mm x 1 1/2 inch bolts, (2) 8mm steel washers and (1) 8mm locknuts. (picture 15 and 16)
- 38 Tighten all bolts and locknuts on the legs and cross braces.



Advanced Game Technology
8915 N. Pioneer Road
Peoria, IL 61615
(309) 691-2950
www.advancedgametechnology.com